

## Warranty

- To receive after service, have the following ready before you contact our branches.

1. Name of the product.
2. Model number of the product.
3. The area of problem.
4. Phone number and address at which you can be contacted.

## Warranty Card

|                 |  |
|-----------------|--|
| PRODUCT         |  |
| MODEL           |  |
| DATE PURCHASED  |  |
| WARRANTY PERIOD |  |
| AGENCY ADDRESS  |  |

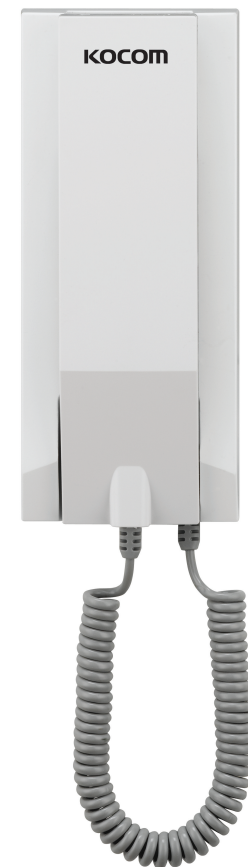
- KOCOM Warranties the original purchaser of this product as follows.

- 1) This product is produced under strict quality control and inspection procedures.
- 2) If this product breaks down during proper use as a result of product defect, KOCOM will repair it within one year from date of purchase free of charge.
- 3) The following cases will be subject to charge, even during warranty period:
  - a. Breakdown during transport, or through careless treatment, by consumer.
  - b. Breakdown cause by unauthorized repair, or system modification.
  - c. Breakdown caused by natural disaster or power disorder.

# KIP-300 MANUAL

## INTERPHONE

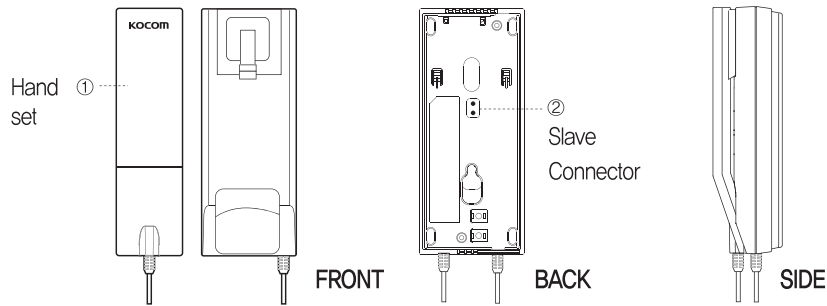
- Sub unit for KIP-620ML
- Gentle electronic sound
- Easy installation (2 wire non-polarity)



Thank you very much  
for your purchasing of  
our product.  
Please read carefully  
before operating and  
then keep it. Thank you.

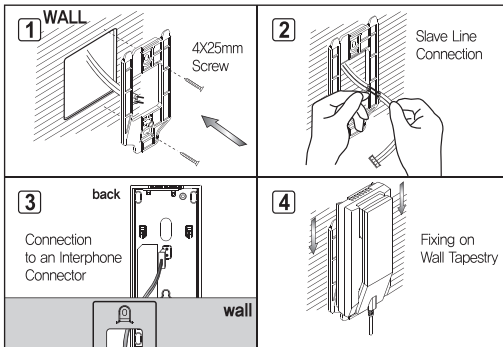


## Name of Devices



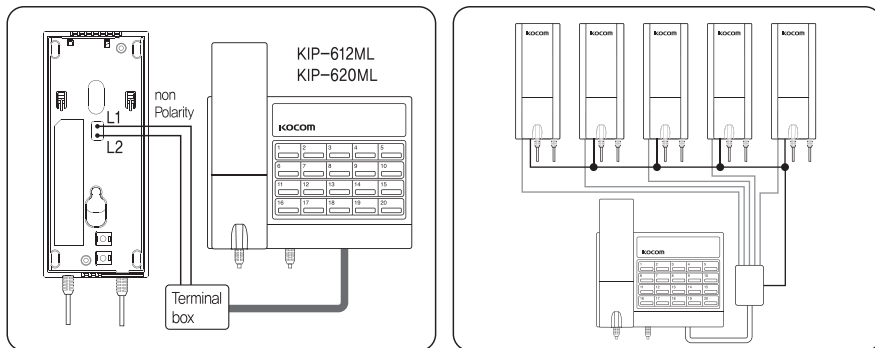
## How to Install

### ■ Interphone Installation



- ① Install an "Interphone Wall-mounting Tapestry" on a wall.
- ② Connect a "Slave Connector" to the wire installed.
- ③ Connect a "Slave Connector" to the connector on the backside of an interphone.
- ④ Install an interphone on an "Interphone Wall-mounting Tapestry" and then fix it.

## Wiring Diagram

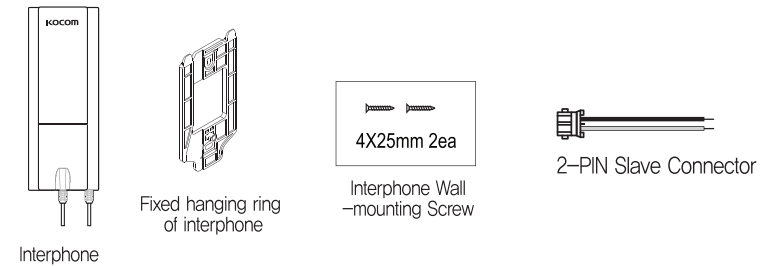


- To connect a wiring code to a terminal, loose a screw, connect the end of a cord to the bottom of the screw and then fix it.
- To fix a wiring code, fix it with a stapler not to damage the cord.
- To use the existing wire, be careful of disconnection and short circuit.

## Product Functions

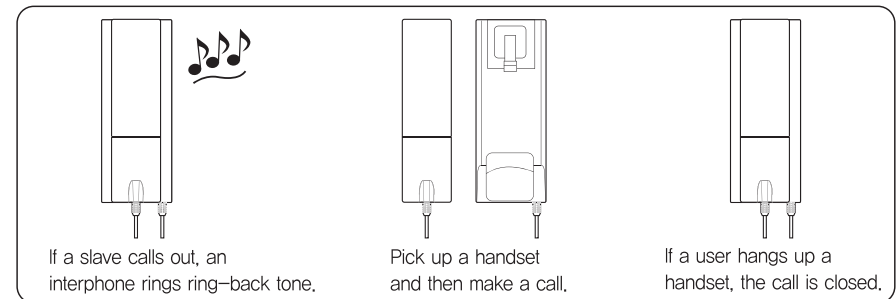
|                      |                            |
|----------------------|----------------------------|
| Model No.            | KIP-300                    |
| Input Power          | supplied by DC 24V Slave.  |
| Power Consumption    | Under 2W during Operation  |
| Call Mode            | Handset Call               |
| Wiring Specification | 2-Wire(slave) Non-Polarity |
| Size                 | (W)75mmX(H)176mmX(D)52mm   |

## Product Composition



## How to Operate

### ■ Paging and Calling from a Slave to Interphone



### ■ Paging and Calling from an Interphone to a Slave

